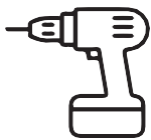


INSTALLATION MANUAL

PRE-INSTALLATION CHECKS

- It is highly recommended that this product is installed by a qualified electrician in accordance with current IEE Wiring Regulations. Wrong installation may lead to product damage and personal injury. This may also invalidate the product warranty
- Check that the mirror is compatible with your current requirements
- Please inspect all mirror edges thoroughly before installation. Once the seal over the mounting hole is broken we will not be liable for any breakages
- Do not set the mirror down on a hard surface
- Make sure the mains power is turned off before installation
- Please check the wall for any hidden pipes, electric cables or otherwise before drilling holes in the wall
- This mirror must be connected to continuous power and must therefore not be operated by an external switch.
- This light fitting is a class I product and therefore must be earthed

TOOLS REQUIRED



Drill



Spirit level



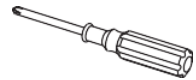
Tape measure



Drill bit Ø8



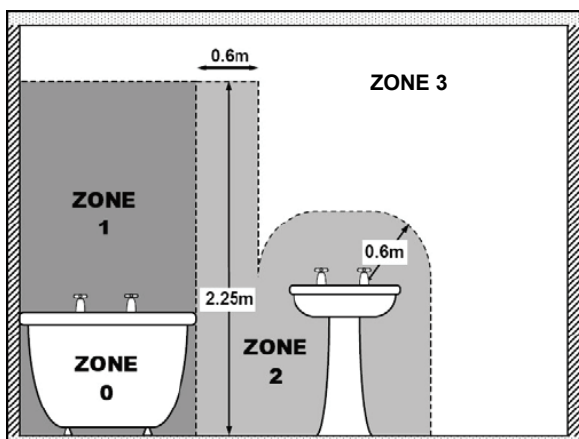
Pencil



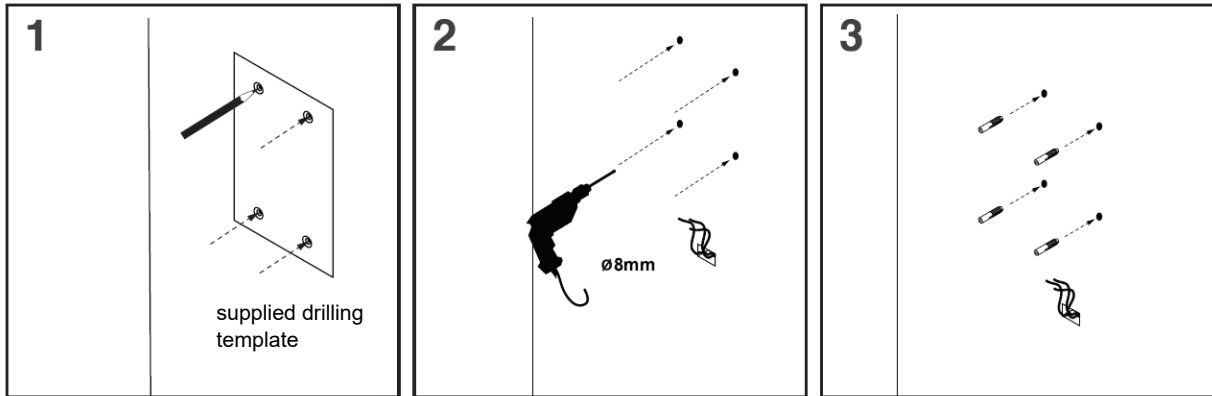
Screwdriver

INSTALLATION ZONE

To ensure safe installation of electrical appliances in the bathroom, please follow the zonal information closely. This bathroom mirror is manufactured to meet IP44 standards, thereby making it suitable for use in Zone 2 and Zone 3. Please note that inside a 60 cm radius above a basin is also Zone 2.



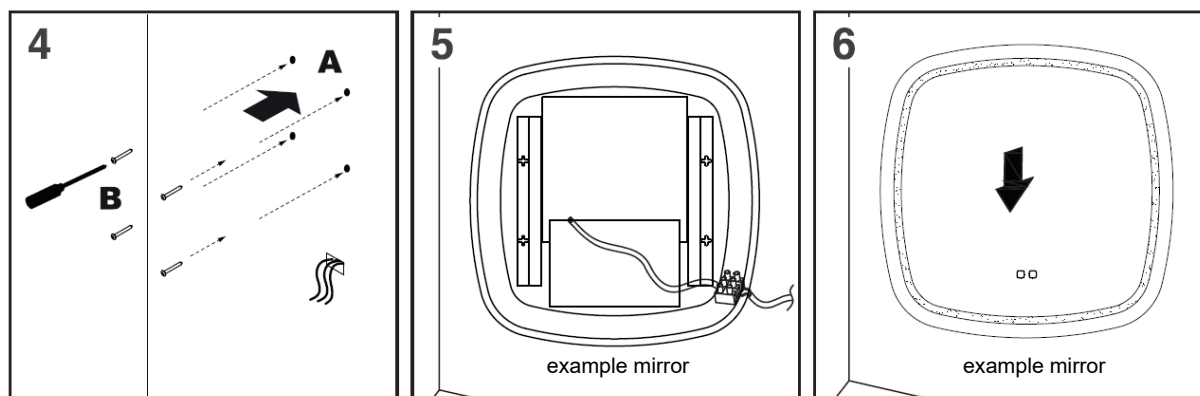
INSTALLATION PROCESS



1 Determine the position of the mirror on the wall by using a tape measure. Then use the supplied drilling template to mark the drill holes on the wall with a pencil.

2 Use the drill with an appropriate $\text{\O}8$ drill bit to make the holes at the marked positions.

3 Insert the supplied wall plugs. **NOTE:** these wall plugs are only suitable for solid stone/brick walls. For plasterboard please use the appropriate plugs, available from any DIY store.



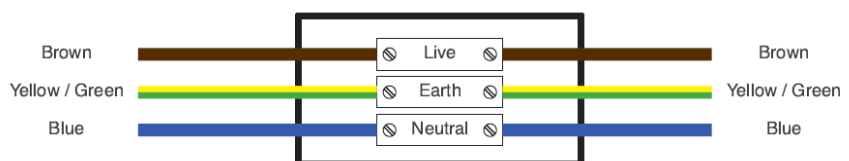
4 Use a screwdriver to tighten the screws into the holes. Leave the screw head 8-12 mm exposed.

5 Ensure the power is switched off. Use the supplied terminal block to connect the 3-core wires with those reserved on the wall (see wiring diagram).

6 Hang the mirror, with at least 2 persons, on the exposed screws and then settle the mirror into the slots. Finally switch on the power and test the product.

WIRING DIAGRAM

COLOUR CODING:
 L - Live = Brown
 N - Neutral = Blue
 ⊕ - Earth = Green & Yellow



TOUCH SWITCH OPERATION

Applicable for models 001/002/004/005/006/007/008/009/010)

Left touch switch:

First touch: ON mode for direct front light + heating

Second touch: ON mode for indirect ambient light + heating

Third touch: ON mode for both direct and indirect light + heating

Fourth touch: OFF mode for both direct and indirect light + heating

Dimming function: when lights are ON, hold down the left touch switch to activate the dimming function

Right touch switch:

Color change: when lights are ON, hold down the right touch switch to activate the color change function

Memory function:

The mirror will remember your preselected color and light intensity settings

Applicable for model 003

Left touch switch:

First touch: ON mode for light + heating

Second touch: OFF mode for light + heating

Dimming function: when lights are ON, hold down the left touch switch to activate the dimming function

Right touch switch:

Color change: when lights are ON, hold down the right touch switch to activate the color change function

Memory function:

The mirror will remember your preselected color and light intensity settings

CARE & CLEANING INSTRUCTIONS

- Do not use abrasives or solvents when cleaning the mirror
- We recommend cleaning the mirror with a soft, clean, slightly moist cloth or chamois
- Always dry the mirror and mirror edges thoroughly after cleaning
- Effective (automatic) ventilation is crucial to ensure the quality and appearance of the mirror
- Make sure that no moisture comes into contact with the lighting and / or electronic parts